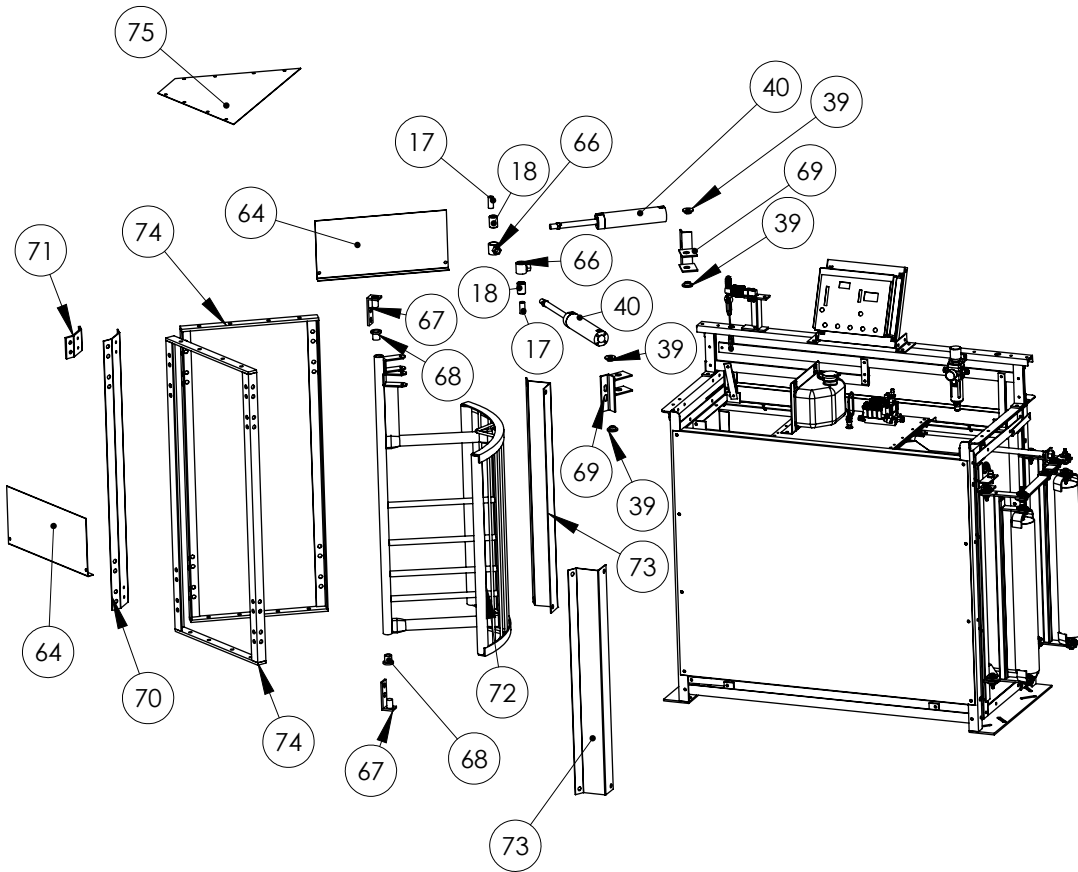


# FS-SS0100 Survey Scale Exit Gate Exploded View



| Item No. | Part Number | Description                               | Qty. |
|----------|-------------|---|------|
| 17       | SP-W12409   | Wheel Bushing                             | 2    |
| 18       | RXC-4100    | Steel Bushing for Entrance Gate Wheel     | 2    |
| 39       | RFM-7420    | Bushing Nylon Flange 1x7/16x1/2 Bore      | 6    |
| 40       | RFF-4020    | Air Cylinder 50x200 Metric Ports          | 3    |
| 43       | KS-SS0127   | Entrance Cylinder Backing Plate           | 1    |
| 46       | KS-SS0112   | Spray Marker/Detector Mount               | 1    |
| 51       | KS-SS0106   | Basket End Cap                            | 2    |
| 54       | KS-SS0114   | Basket Side Panel                         | 2    |
| 63       | KS-SS0108   | Survey Scale Side Panel                   | 2    |
| 64       | KS-SS0131   | Tee Gate Side Guard                       | 2    |
| 66       | KS-SS0129   | Gate Tee Nut                              | 2    |
| 67       | KG-G22900   | Gate Hinge                                | 2    |
| 68       | RFM-7422    | Bushing Nylon Flange 1-1/2x1-1/4x29/32 BC | 2    |
| 69       | KS-SS0118   | Tee Gate Cylinder Mount                   | 2    |
| 70       | KS-SS0201   | Switch Lok Back Plate                     | 1    |
| 71       | KS-SS0128   | Tee Gate Hinge Mount Plate                | 1    |
| 72       | KS-SS0117   | Tee Gate                                  | 1    |
| 73       | KS-SS0115   | Adapter Plate                             | 2    |
| 74       | KG-G24700   | Exit Door Frame                           | 2    |
| 75       | KS-SS0126B  | Tee Gate Top Guard                        | 1    |